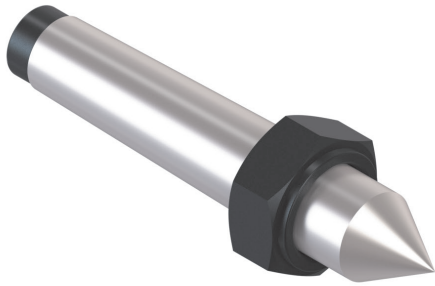


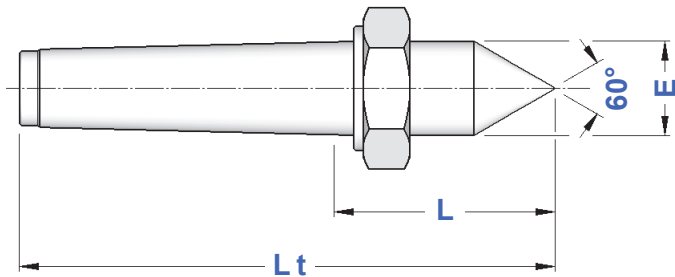
DIN 807

**CONTROPUNTE ATTACCO CM IN ACCIAIO
CON ESTRATTORE**
STEEL MT SHANK TAILSTOCKS WITH RELEASE NUT

CP.E

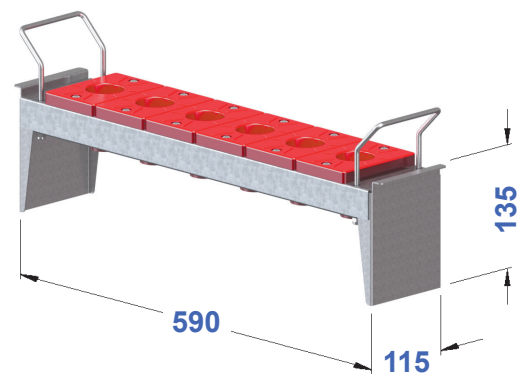
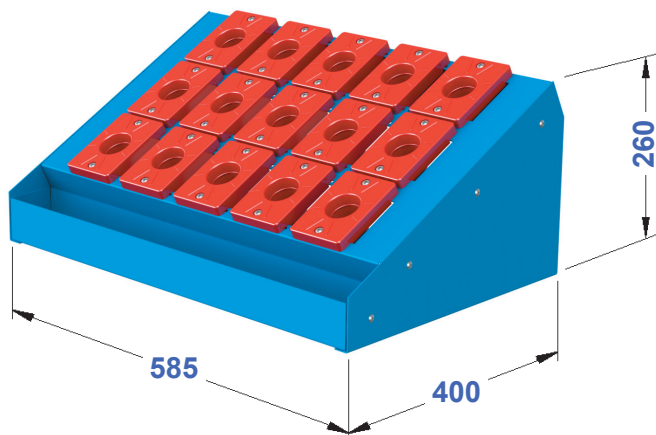


TIPO	Art.	E	L	Lt
CP. E - CM 2	5381	18,0	36,0	100
CP. E - CM 3	5382	24,1	44,0	125
CP. E - CM 4	5383	31,6	57,5	160
CP. E - CM 5	5384	44,7	70,5	200
CP. E - CM 6	8490	63,8	88,0	270





MAGAZZINI per CONO MORSE
MORSE TAPER SHANK STORAGE


UNITA' DA BANCO per CONO MORSE
BENCH UNITIES for MORSE TAPER SHANK



Forniti completi di boccole rosse
Supplied complete of
red tool holder bushings

Fornite complete di boccole rosse
Supplied complete of
red tool holder bushings

TIPO	Art.	N° SEDI		
MAG. CM 2	9468	15	9448	0033
MAG. CM 3	9469	15	9449	
MAG. CM 4	3696	15	4400	
MAG. CM 5	3702	15	4418	

TIPO	Art.	N° SEDI	
UNITÀ CM 2	9458	6	9448
UNITÀ CM 3	9459	6	9449
UNITÀ CM 4	4329	6	4400
UNITÀ CM 5	4330	6	4418